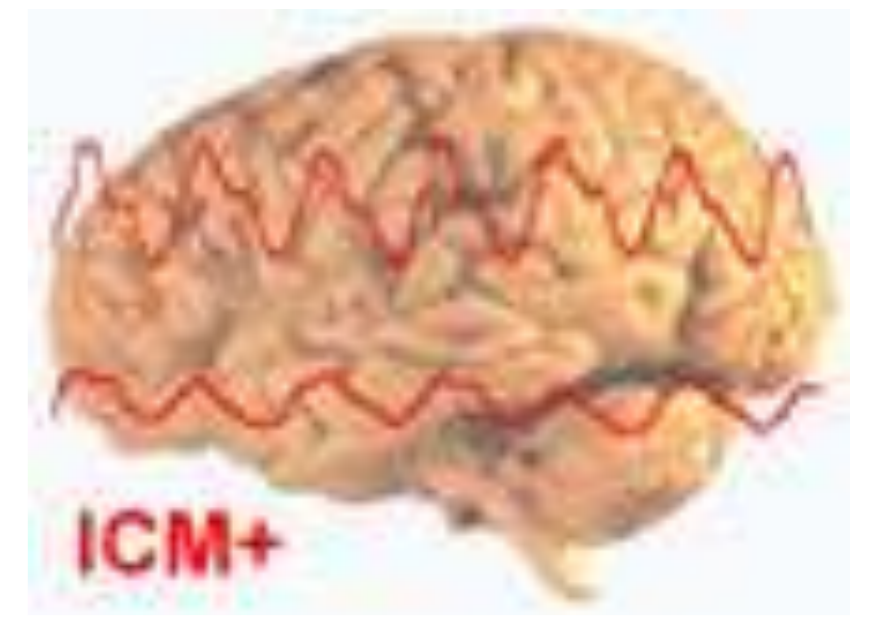


# ICM+ users' club meeting

Department of Clinical Neuroscience,  
Academic Neurosurgical Unit,  
Addenbrooke's Hospital, Cambridge University, United Kingdom



## Sunday, 12<sup>th</sup> September, 11:00-14:00

This meeting is especially designed for current and future users of ICM+ software as well as researchers and clinicians interested in multimodal monitoring for clinical neurosciences, intensive care and other clinical and experimental practices.

### The goals of the ICM+ session are:

1. to gather the ICM+ users who focus on clinical and experimental monitoring
2. to provide an international platform for exchanging experiences in utilizing ICM+ software for multimodal monitoring and medical data processing
3. to discuss scientific findings from various research centers
4. to demonstrate new functionality and methodologies recently incorporated in the ICM+ software

**Chairman: Ken Brady, MD, Associate Professor,  
Anesthesiology and Pediatrics, Texas Children's Hospital, Baylor College of Medicine**

11.00 - 11.30	<b>Peter Smielewski, PhD</b> Neurosurgery Unit, Addenbrooke's Hospital University of Cambridge, UK	Main Lecture: ICM+: the past, the present and the future
11.30 - 11.45		discussion
11.45 - 12.00		short coffee break

### Presentations: 8 minutes + 2 minutes for discussion

12.00 - 12.10	<b>Ken Brady, MD</b> Anesthesiology and Pediatrics, Texas Children's Hospital, Baylor College of Medicine	Laboratory vs. clinical uses of ICM+
12.10 - 12.20	<b>Christian Zweifel, MD</b> Departments of Neurosurgery and Emergency Medicine, University Hospital, Basel, Switzerland	Multimodal signal acquisition and data processing using ICM+
12.20 - 12.30	<b>Kristian Aquilina, MD</b> Department of Neurosurgery, Frenchay Hospital, Bristol, United Kingdom	Assessment of CSF dynamics in hydrocephalus
12.30 - 12.40	<b>Christina Haubrich, MD, PhD</b> Department of Neurology, Aachen University, Germany	ICM+ and the blood pressure - flow velocity relationship
12.40 - 12.50	<b>Magdalena Kasprowicz, PhD</b> Wroclaw University of Technology, Poland	How can we create and analyze new signals using ICM+?
12.50 - 13.00	<b>Jennifer Diedler, MD</b> Department of Neurology, University of Heidelberg, Germany	Dealing with artefacts
13.00 - 13.10	<b>Phil Lewis, BSc</b> Department of Neurosurgery, Prince Alfred Hospital, Australia	Time series and batch data analysis with ICM+
13.10 - 13.20	<b>Frederick Daher, MD</b> Department of Anesthesiology and Intensive Care Medicine, University of Bonn, Germany	Options and pitfalls when using ICM+ for collecting data from Philips Intellivue- and Hemedex CBF-monitors
13.20 - 13.30	<b>Bernhard Schmidt, PhD</b> Department of Neurology Chemnitz Medical Centre, Germany	How to use plug-in for non-invasive ICP
13.30 - 13.40	<b>Martin Schuhmann MD, PhD</b> Department of Neurosurgery, University Hospital Tübingen, Germany	Overnight ICP monitoring
13.40 - 13.50	<b>Luzius Steiner MD, PhD</b> Department of Anaesthesia, University Hospital Lausanne, Switzerland	Intraoperative non-invasive monitoring of cerebral perfusion